

IDM UID <b>8Z4FWT</b>
VERSION CREATED ON / VERSION / STATUS <b>25 Apr 2023 / 1.0 / Approved</b>
EXTERNAL REFERENCE / VERSION

## Technical Specification

# Technical Specification-Electromechanical Engineering Support for DMS Design

This document concerns DMS tenant integration focussed on mechanical and electro-mechanical design activities performed in all DMS relevant building areas. This includes the following areas: Closure plates, port interspaces, port cells, galleries and I&C related other buildings of the ITER project.

This is intended to be a Call for Expertise (CFE) contract.

<i>Approval Process</i>			
	<i>Name</i>	<i>Action</i>	<i>Affiliation</i>
<i>Author</i>	<b>Kruezi U.</b>	<b>25 Apr 2023:signed</b>	<b>IO/DG/EDD/FCD/FWC</b>
<i>Co-Authors</i>	<b>Sulaiman D.</b>	<b>25 Apr 2023:signed</b>	<b>IO/DG/EDD/FCD/FWC</b>
<i>Reviewers</i>	<b>Avigni P.</b>	<b>15 May 2023:recommended</b>	<b>IO/DG/SQD/NS</b>
	<b>Cai L.</b>	<b>04 May 2023:recommended</b>	<b>IO/DG/SQD/QMD</b>
	<b>Lassueur F.</b>	<b>27 Apr 2023:recommended</b>	<b>IO/DG/DO/CAA</b>
	<b>Lee J. E.</b>	<b>15 May 2023:recommended</b>	<b>IO/DG/FPD/PCD/ESOC</b>
	<b>Maruyama S.</b>	<b>02 May 2023:recommended</b>	<b>IO/DG/EDD/FCD/FWC</b>
	<b>Willms S.</b>	<b>26 Apr 2023:recommended</b>	<b>IO/DG/EDD/FCD</b>
<i>Approver</i>	<b>Luce T.</b>	<b>25 May 2023:approved</b>	<b>IO/DG/SCOD</b>
<i>Document Security: Non-public - Unclassified</i>			
<i>RO: Kruezi Uron</i>			
<i>Read Access</i>	<b>LG: TS reviewers , LG: DMS Contractors, LG: FCED DH , LG: DMS Project Team, AD: IO_Director-General, AD: External Management Advisory Board, AD: IDM_Controller, AD: OBS - Fuelling &amp; Wall Conditioning Section (FWC) - EXT, AD: OBS - Fuelling &amp; Wall Conditioning Section (FWC), AD: Auditors, AD: ITER Ma...</b>		

*Change Log*

**Technical Specification-Electromechanical Engineering Support for DMS Design (8Z4FWT)**

<i>Version</i>	<i>Latest Status</i>	<i>Issue Date</i>	<i>Description of Change</i>
v0.0	In Work	24 Apr 2023	
v1.0	Approved	25 Apr 2023	first version

## Table of Contents

<b>1</b>	<b>PURPOSE</b> .....	<b>2</b>
<b>2</b>	<b>SCOPE</b> .....	<b>2</b>
<b>3</b>	<b>DEFINITIONS</b> .....	<b>2</b>
<b>4</b>	<b>REFERENCES</b> .....	<b>2</b>
<b>5</b>	<b>ESTIMATED DURATION</b> .....	<b>3</b>
<b>6</b>	<b>WORK DESCRIPTION</b> .....	<b>3</b>
6.1	Introduction .....	3
6.2	Mechanical & Electro-Mechanical design and integration .....	4
6.3	Engineering documentation.....	5
<b>7</b>	<b>RESPONSIBILITIES</b> .....	<b>6</b>
7.1	Contractor’s obligations .....	6
7.2	Obligations of the ITER Organization .....	6
<b>8</b>	<b>LIST OF DELIVERABLES AND DUE DATES</b> .....	<b>7</b>
<b>9</b>	<b>ACCEPTANCE CRITERIA</b> .....	<b>7</b>
<b>10</b>	<b>SPECIFIC REQUIREMENTS AND CONDITIONS</b> .....	<b>7</b>
<b>11</b>	<b>WORK MONITORING / MEETING SCHEDULE</b> .....	<b>8</b>
<b>12</b>	<b>DELIVERY TIME BREAKDOWN</b> .....	<b>8</b>
<b>13</b>	<b>QUALITY ASSURANCE (QA) REQUIREMENTS</b> .....	<b>8</b>
<b>14</b>	<b>CAD REQUIREMENTS (IF APPLICABLE)</b> .....	<b>8</b>
<b>15</b>	<b>SAFETY REQUIREMENTS</b> .....	<b>8</b>

## 1 Purpose

The purpose of this technical specification (ITER\_D\_8Z4WT) is to outline and define how the development of the Disruption Mitigation System (DMS) shall be supported towards the FDR.

## 2 Scope

This document concerns DMS tenant integration focussed on mechanical and electro-mechanical design activities performed in all DMS relevant building areas. This includes the following areas: Closure plates, port interspaces, port cells, galleries and I&C related other buildings of the ITER project.

## 3 Definitions

For a complete list of ITER abbreviations see: [ITER Abbreviations \(ITER\\_D\\_2MU6W5\)](#).

Acronym	Meaning
ALARA	As Low As Reasonably Achievable
CAD	Computer Aided Design
DA	Domestic Agency
DET	Data Exchange Transfer
DFW	Diagnostic First Wall
DIR	Design Integration Review
DMS	Disruption Mitigation System
DSM	Diagnostic Shielding Module
EP	Equatorial port
FDR	Final Design Review
FP	First Plasma
HFE	Human Factors and Ergonomics
HIRA	Hazard Identification and Risk Assessment
HoF	Human Organizational Factor
IO	ITER Organization
ISS	Interspace Support Structure
ORE	Occupational Radiation Exposure
PCSS	Port Cell Support Structure
PDR	Preliminary Design Review
PFPO-1	Pre-Fusion Plasma Operation 1
PI	Port Integrator
PIA	Protection Important Activity
PIC	Protection Important Component
PP	Port Plug
RH	Remote Handling
RO	Responsible Officer
SDDR	Shutdown Dose Rate
UP	Upper Port

## 4 References

- [1] ITER\_D\_27ZRW8 - Project Requirements
- [2] ITER\_D\_BEJQWA - SRD 18.DM

- [3] ITER\_D\_45P8YK - Defined requirements PBS 18 DMS
- [4] ITER\_D\_2NC6CB - 18.DM System Design Description for DMS.
- [5] ITER\_D\_RUGWUK - Safe Access for Maintainability
- [6] ITER\_D\_258LKL - Working Instruction for the Qualification of ITER safety codes
- [7] ITER\_D\_QUK6LF - ITER Human & Organizational Factors Policy
- [8] ITER\_D\_2MU6W5 - ITER Abbreviations
- [9] ITER\_D\_KTU8HH - Software Qualification Policy
- [10] ITER\_D\_7M2YKF v1.7 - Order dated 7 February 2012 relating to the general technical regulations applicable to INB - EN

## 5 Estimated Duration

The overall duration of this work is 12 months.

## 6 Work description

The engineering support may include the activities to support the DMS tenant mechanical and electromechanical integration of EP#02, EP#08, EP#17, UP#02, UP#08, UP#14; Propose and develop adequate mechanical and electrical solutions for the DMS and its integration in the ITER environment; and Help in preparation of the CAD models, design reviews technical documentation and presentations.

Details on the specific work are listed in chapter 6.2

The scope of the work is limited to the DMS project and the related areas. This includes components in and on the Port Plug (PP) (see fig.1), closure plate, Interspace and Port Cell areas (Fig.2) in EPs and UPs but also building areas relevant to the DMS such as instrumentation cubicles in building 74.

### 6.1 Introduction

The purpose of the ITER DMS is to provide machine protection in order to reduce the detrimental effects of plasma disruptions and to ensure the appropriate lifetime of all affected ITER components. It utilizes cryogenic hydrogen and neon pellets which are generated inside the injectors, which are located in the Interspace Support Structure (ISS). These pellets are pneumatically propelled, in the period of milliseconds, towards the plasma and, just before entering the plasma, they are shattered into small fragments so as to reduce damage to the plasma facing components and to other structures inside the ITER tokamak. The DMS is located in ITER ports on the equatorial level and the upper levels (see an example of the DMS integrated in the Equatorial Port (EP) #2 in fig. 1). All DMS units on the equatorial share a common and modular design and so do the units on the upper ports.

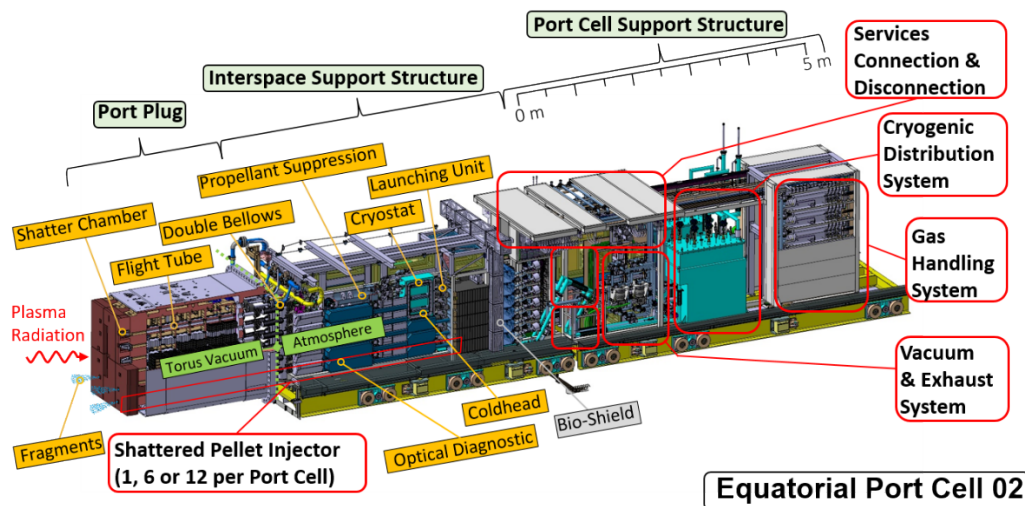


Figure 1 Typical DMS in EP integrated into the ISS and PCSS.

The ITER DMS is a large system with a total of 27 injectors distributed toroidally and poloidally in EP #02, EP#08, EP#17 and Upper Port (UP) #02, UP#08, UP#14. Each of these systems can be broken down into a series of work packages such as the Pellet Injector, Cryogenic System, Gas Handling System, Vacuum System and the Control System as shown in figure 2. Each of these work packages can be broken down further into individual components or assemblies.

There is not a single work package of interest for this contract since it is of transversal nature covering the electromechanical aspects of the design integration.

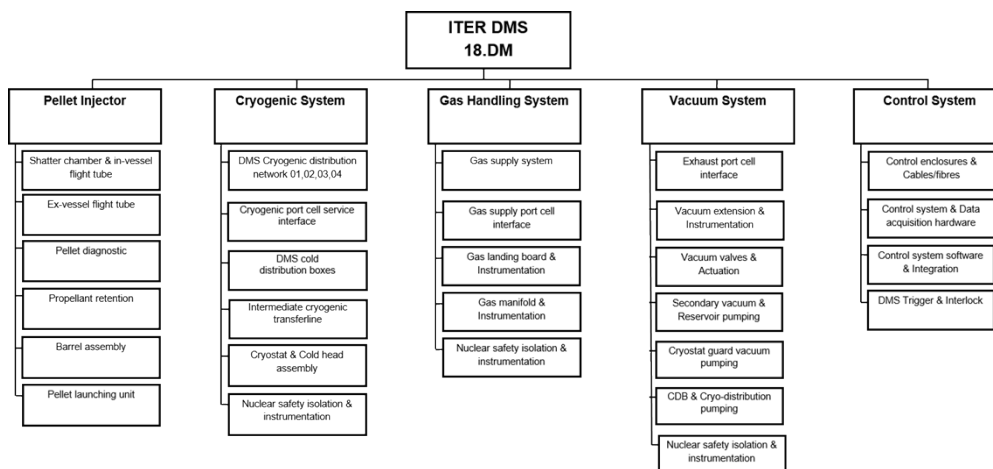


Figure 2 The DMS Plant Breakdown

## 6.2 Mechanical & Electro-Mechanical design and integration

The objective is to continuously support the DMS design and the integration of the design into this highly constraint environment and to develop solutions appropriate for the DMS. The list of specific and general activities expected to be performed is

- Providing recommendations and following up adaptation needed in the iterative process of tenant integration;
- Development of PP elements and the integration of solutions necessary for integration:
  - Define, design, and implement the DMS interface with the DFW. Implement R&D results on the shattering geometry in a timely manner.

- finding adequate space for the DMS components and shielding trays and developing of the fixation elements as per integration needs;
- identifying and advising the PI on routing and service integration solution using standard solutions (clamps) for modular DSM structure;
- continuously support the interfaces and keep them up-to-date
- delivery of the relevant CAD models;
- Development of the closure plate elements and integration solutions:
  - finding proper arrangement of the flanges appropriate for inspection and maintenance,
  - support the development of services (SVS, cables), their routing and their integration,
  - Support the implementation of connection and disconnections of components for extra low voltage, low voltage and high voltage
  - participation in the development of the connection bridge between closure plate and building,
  - delivery of the relevant CAD models;
- Development of ISS and PCSS structural elements and integration solutions:
  - finding adequate space for the DMS components and shielding blocks, appropriate for inspection and maintenance,
  - support the development of services, their routing and integration, respecting segregation rules and signal quality requirements
  - participation in the development of the connection of the services between ISS and PCSS, between ISS and building, between PCSS and building,
  - delivery of the relevant CAD models,
  - Development of shielding blocks for ISS and PCSS (if required)
- Delivery of CAD models of integrated ports in preparation for
  - Neutronics analysis,
  - Maintenance, ORE and inspection assessments,
  - HFE analysis,
  - Design reviews (e.g. PDR),
  - Integration reviews (DIR);
- Support of maintenance operations development in the ISS and PCSS areas including area in between closure plate and ISS;
- Support of the development of human occupational factor analysis;
- Launch CAD Data Exchange Transfer (DET) tasks following IO CAD rules;

### **6.3 Engineering documentation**

Some of the engineering documentation which may be expected to be prepared are

- Bill of Materials;
- documents to be used to define interfaces
- interface sheets

- design descriptions as input for neutronic analyses;
- CAD models
- input to any other required ITER design documentation

Furthermore it may be expected

- to participate in regular DMS group meetings;
- to participate in design and integration reviews;
- contribute or provide presentation related to mechanical design, integration and assembly;

## **7 Responsibilities**

### **7.1 Contractor's obligations**

In order to successfully perform the tasks in these Technical Specifications, the Contractor shall:

- Strictly implement the IO procedures, instructions and use templates;
- Provide experienced and trained resources to perform the tasks;
- Contractor's personnel shall possess the qualifications, professional competence and experience to carry out services in accordance with IO rules and procedures;
- Contractor's personnel shall be bound by the rules and regulations governing the IO ethics, safety and security IO rules.

The official language of the ITER project is English. Therefore, all input and output documentation relevant to this Contract shall be in English. The Contractor shall ensure that all the professionals in charge of the Contract have an adequate knowledge of English, to allow easy communication and adequate drafting of technical documentation. This requirement also applies to the Contractor's staff working at the ITER site or participating in meetings with the ITER Organization.

### **7.2 Obligations of the ITER Organization**

The ITER Organization shall

- Nominate the Responsible Officer to manage the Contract;
- Organise regular meeting(s) on work performed;
- Provide offices at IO premises.

The ITER Organization shall in addition give the possibility to the contractor to review documents on the ITER documents database (IDM). Furthermore the IO shall make all technical data and documents available to the Contractor which will be required to carry out its obligations in a timely manner.



## 8 List of deliverables and due dates

N°	Target date (months)	Deliverable description
D1	T0+3	Develop the design as part of the initial detailed design preparation phase of the FDR. Discuss with the IO RO and upload supporting description document in the IDM as per request. Provide a report on IDM summarising the work of this deliverable.
D2	T0+6	Develop the design as part of the final detailed design preparation phase of the FDR Discuss with the IO RO and upload supporting description document in the IDM as per request. Provide a report on IDM summarising the work of this deliverable.
D3	T0+9	Support the preparation and execution of the FDR. Discuss with the IO RO and upload supporting description document in the IDM as per request. Provide a report on IDM summarising the work of this deliverable.
D4	T0+12	Support the chit resolution of the FDR and participate in the initiate preparation for the upcoming manufacturing design phase. Discuss with the IO RO and upload supporting description document in the IDM as per request. Provide a report on IDM summarising the work of this deliverable.

## 9 Acceptance Criteria

The deliverables will be posted in the Contractor's dedicated folder in IDM, and the acceptance by the IO will be recorded by the approval of the designated IO TRO. These criteria shall be the basis of acceptance by IO following the successful completion of the services. These will be in the form of reports as indicated in section 8, Table of deliverables.

## 10 Specific requirements and conditions

In order to complete the tasks in a timely manner the following skills are required:

- Experience in mechanical engineering
- Experience in working with CATIA V5
- Experience with the ENOVIA database
- Experience with CATIA/ENOVIA complex assembly management and tagging schemes
- Experience with the design of pressure and vacuum vessels
- Experience in pneumatic and electrical control implementation
- Experience with electrical wiring, routeing and grounding of ELV, LV and HV cabling

## 11 Work Monitoring / Meeting Schedule

Work is monitored through reports (see List of Deliverables section).

The Contractor will predominantly work offsite.

## 12 Delivery time breakdown

T0 is the date of the contract signature. See Section 8 List *Deliverables section and due dates*.

## 13 Quality Assurance (QA) requirements

The organisation conducting these activities should have an ITER approved QA Program or an ISO 9001 accredited quality system.

The general requirements are detailed in [ITER Procurement Quality Requirements \(ITER\\_D\\_22MFG4\)](#).

Prior to commencement of the task, a Quality Plan must be submitted for IO approval giving evidence of the above and describing the organisation for this task; the skill of workers involved in the study; any anticipated sub-contractors; and giving details of who will be the independent checker of the activities (see [Procurement Requirements for Producing a Quality Plan \(ITER\\_D\\_22MFMW\)](#)).

Documentation developed as the result of this task shall be retained by the performer of the task or the DA organization for a minimum of 5 years and then may be discarded at the direction of the IO. The use of computer software to perform a safety basis task activity such as analysis and/or modelling, etc. shall be reviewed and approved by the IO prior to its use, in accordance with [Quality Assurance for ITER Safety Codes \(ITER\\_D\\_258LKL\)](#).

## 14 CAD Requirements (if applicable)

For the contracts where CAD design tasks are involved, the following shall apply:

The Supplier shall ensure that all designs, CAD data and drawings delivered to IO comply with the Procedure for the Usage of the ITER CAD Manual ([2F6FTX](#)), and with the Procedure for the Management of CAD Work & CAD Data (Models and Drawings [2DWU2M](#)).

Drawing Registration in the IO system shall be performed according to the Procedure for the Management of Diagrams and Drawings in pdf Format Using the SMDD Application ([KFMK2B](#)).

The reference scheme is for the Supplier to work in a fully synchronous manner on the ITER CAD platform (see detailed information about synchronous collaboration in the ITER [P7Q3J7](#) - Specification for CAD data Production in ITER direct contracts). This implies the usage of the CAD software versions as indicated in CAD Manual 07 - CAD Fact Sheet ([249WUL](#)) and the connection to one of the ITER project CAD data-bases. Any deviation against this requirement shall be defined in a Design Collaboration Implementation Form (DCIF) prepared and approved by DO and included in the call-for-tender package. Any cost or labour resulting from a deviation or non-conformance of the Supplier with regards to the CAD collaboration requirement shall be incurred by the Supplier.

## 15 Safety requirements

ITER is a Nuclear Facility identified in France by the number-*INB-174* (“Installation Nucléaire de Base”).

For Protection Important Components (PIC) the French Nuclear Regulation must be observed, in application of the Article 14 of the ITER Agreement.

In such case the Suppliers and Subcontractors must be informed that:

- The Order 7th February 2012 applies to all the components important for the protection (PIC) and the activities important for the protection (PIA).
- The compliance with the INB-order must be demonstrated in the chain of external contractors.
- In application of article II.2.5.4 of the Order 7th February 2012, contracted activities for supervision purposes are also subject to a supervision done by the Nuclear Operator.

For the Protection Important Components, structures and systems of the nuclear facility, and Protection Important Activities (as per *ITER D PSTTZL*) the contractor shall ensure that a specific management system is implemented for his own activities and for the activities done by any Supplier and Subcontractor following the requirements of the Order 7th February 2012 [10]

Compliance with *ITER D 45P8YK Defined requirements PBS 18 DMS* is mandatory.

Note: DMS Design activities are PIA.

- Refer the Quality class and Safety Class as per the SRD document (BEJQWA).